

# HDMI over IP Extender

VE8900T / VE8900R

## 4K HDMI over IP Extender

VE8950T / VE8950R

- The ATEN VE8900/VE8950 Video over IP Extenders deliver visually lossless 1080p / 4K AV signals with low latency over long distance via a local network of standard Gigabit network switch.

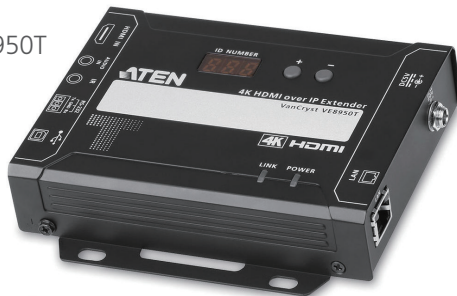
The VE8900/VE8950 provides an effective, easy-to-use, and economical digital signage solution with the following features and advantages that directly address the challenges system integrators encounter when implementing AV over IP systems:

- Limitless scalability and flexibility
- No complicated IP setup
- No additional server PCs or software required
- Go further for less with daisy chaining

Engineered to meet today's demands of large scale, multi-display, 1080p / 4K signal transmission, and designed to be easy to set up and operate, the VE8900/VE8950 Video over IP Extender is an ideal product for a wide range of environments, such as trade shows, airports, university campuses, conference centers, and shopping centers.



VE8950T



VE8950R

Transmitter



Receiver



# Features

## Lightweight Compression with Ultra-low Latency

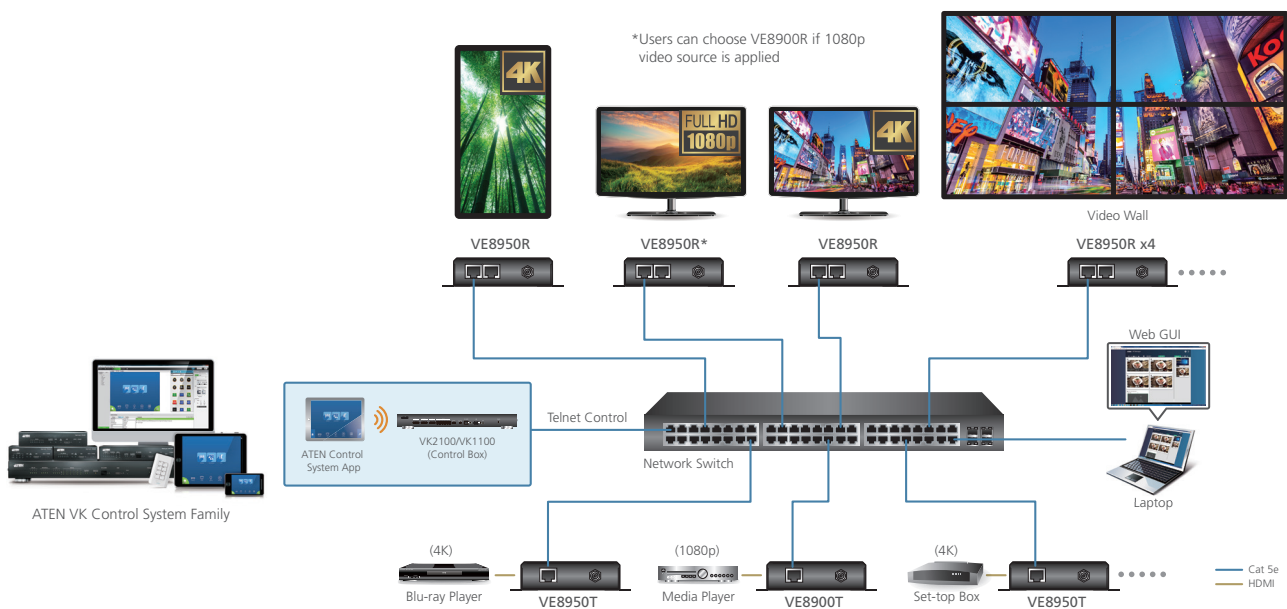
- Delivers visually lossless high-quality video up to 1080p @ 60 Hz (VE8900) / 4K @ 30 Hz 4:4:4 (VE8950)
- Ensures stunning quality video using ATEN advanced video lossless compression technology
- EDID Expert™ selects the optimum EDID settings for smooth power-up, high-quality display and the best video resolution across different screens
- Offers different levels of video compression rate including Smooth, Balance, and High Quality for users to choose depending on practical usage

## Limitless Scalability and Flexibility

- Extends AV connections from a simple point-to-point to a multi-point to multi-point setup via LAN without distance limitations
- Offers multi-functionality in extender, splitter, matrix switch, video wall and daisy chain applications
- Mix and match the latest 4K displays and 1080p screens. The built-in scaler automatically scales up incoming video signal to match the maximum resolution of the connected display devices\*

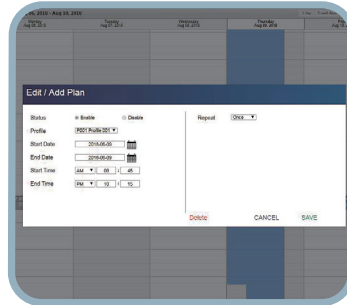
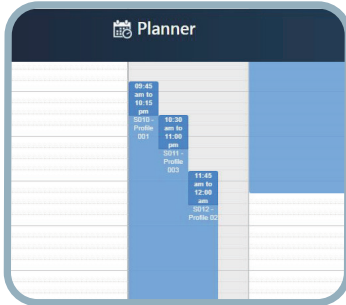
## Collaboration with ATEN Control System

- Integrated solution – Compatible with ATEN Control System, allowing users to directly operate VE8900/8950 via CLI Telnet or RS-232 protocol
- Effortless operation – One click to effectively operate VE Manager, TV, projector, source player, and related equipments via touch panel and keypad



### Spontaneous Scheduling Management

- Offers an user-friendly scheduling management function for users to pre-plan the display schedule
- Provides robust and intuitive scheduling management options to help users to manage all events in the calendar to as detailed as to setting events to minute intervals
- Integrates all VE89 units to arrange the profile by grouping individual receiver or video wall
- Multiple profiles can be arranged to play in any order over a selected period of time



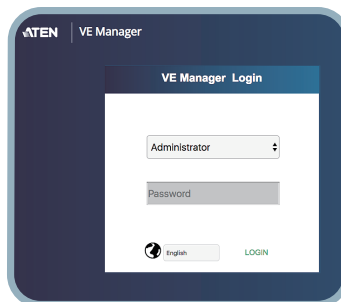
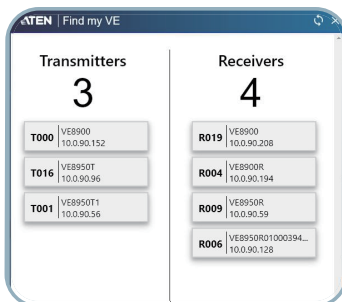
### No Complicated IP Setup

- Simple configuration that requires no extensive IT experience or extra learning
- Effortlessly switches among input sources via top panel pushbuttons



### Web GUI-Based Management, No Additional Server PCs or Software Required

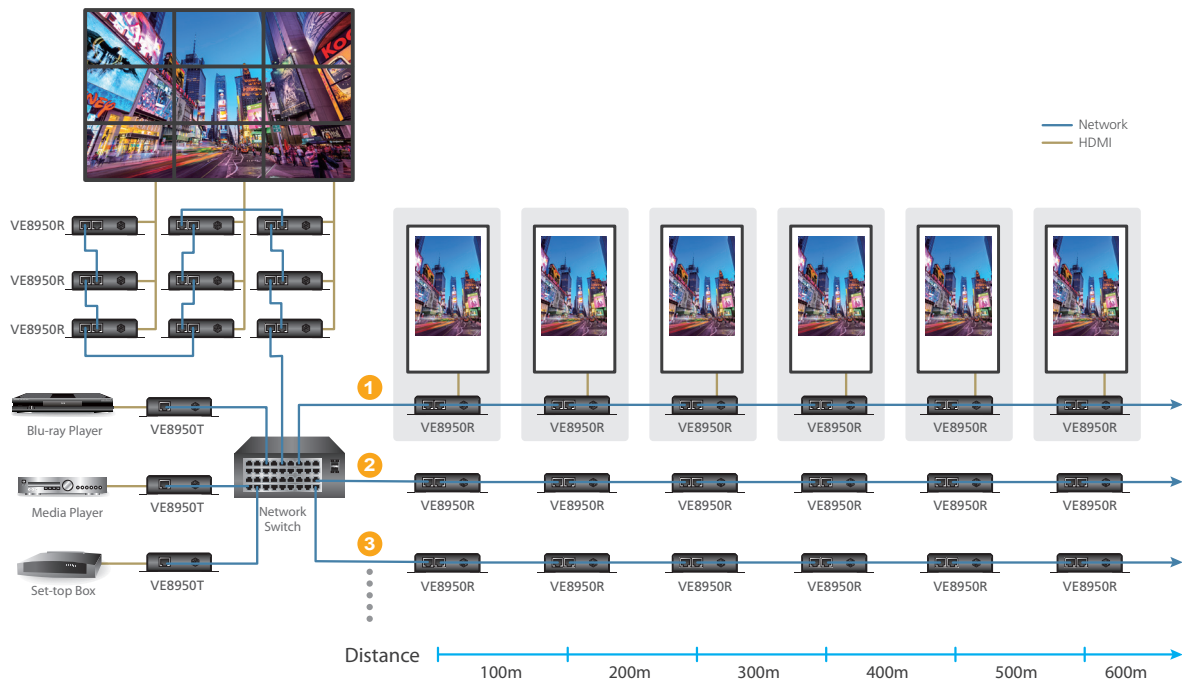
- Simple Access – Without typing IP address on Chrome browser, users are allowed to directly link to VE Manager via one click on “Find My VE” Chrome based free tool



### Go Further For Less with Daisy Chaining\*

- Connects multiple displays through a single port to utilize every port of the network switch and maximize their value
- Easily expandable – cabling and system deployment is easy with no huge network switches and fewer cables needed
- Perfect for large-scale deployment covering hundreds of meters, such as hotel facilities, airports, university campuses, stations, shopping malls, and exhibition centers

\*Depending on your network architecture, we recommend daisy chaining up to 30 units. Please contact ATEN representatives for more details.



Use daisy chains to configure a video wall or expand the AV system hundreds of meters

### Video Wall Support

- Supports up to 8 x 8 video wall (64 displays)\*
- Supports horizontal or vertical (90° and 270° rotation) display orientation
- Easily switches layout profiles, preview and drag-and-drop video sources via the intuitive web GUI

\*Depends on your network architecture, please contact ATEN representatives for more details.

### Embedded / De-embedded Audio Support

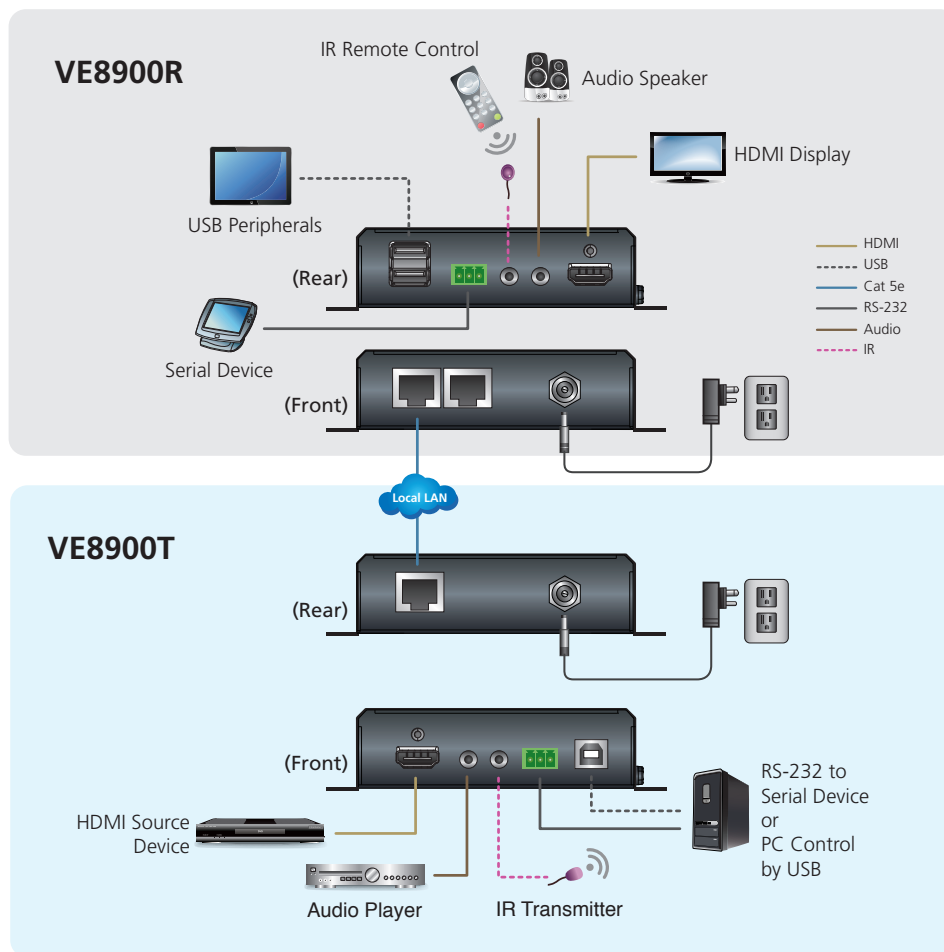
- For VE8900T/8950T – separate audio signal can be embedded into the HDMI stream
- For VE8900R/8950R – audio stream can be extracted from the HDMI stream and delivered as a separate audio signal

### Multiple Control Channels

- Multiple control methods – the system can be managed via Ethernet or top-panel pushbuttons
- USB Connectivity – USB port (USB 2.0) allows for connection of devices such as keyboard, mouse, flash drive, printer, and other USB peripherals\*
- Bi-directional IR Channel – IR transmission is processed one way at a time
- RS-232 Channel – bi-directional RS-232 serial port allows for connection of peripherals such as touch screens and bar code scanners

Note: Each VE8900/8950 transmitter can be controlled by a total of 4 USB touch screens installed to VE8900/8950 receivers.

## Installation Diagram



# Specifications

Functions	VE8900R	VE8950R	VE8900T	VE8950T
<b>Video Input</b>				
Interfaces	N/A		1 x HDMI Type A Female (Black)	
Impedance	N/A		100 Ω	
Max. Distance	N/A		1.8 m	
<b>Video Output</b>				
Interfaces	1 x HDMI Type A Female (Black)		N/A	
Impedance	100 Ω		N/A	
<b>Video</b>				
Max. Data Rate	Average: 150 ~ 500Mbps		Average: 150 ~ 500Mbps	
Compliance	HDMI HDCP Compatible	HDMI (4K) HDCP Compatible	HDMI HDCP Compatible	HDMI (4K) HDCP Compatible
Max. Resolutions / Distance	Up to 1080p@100m (Cat 5e/6, point to point)	Up to 4K@100m (Cat 5e/6, point to point) <b>*4K supported:</b> 4096 x 2160 / 3840 x 2160 @ 30Hz (4:4:4)	Up to 1080p@100m (Cat 5e/6, point to point)	Up to 4K@100m (Cat 5e/6, point to point) <b>*4K supported:</b> 4096 x 2160 / 3840 x 2160 @ 60Hz (4:2:0) 4096 x 2160 / 3840 x 2160 @ 30Hz (4:4:4)
<b>Audio</b>				
Input	N/A		1 x HDMI Type A Female (Black) 1 x Mini Stereo Jack Female (Green)	
Output	1 x HDMI Type A Female (Black) 1 x Mini Stereo Jack Female (Green)		N/A	
<b>Connectors</b>				
Unit to Unit	2 x RJ45 Female		1 x RJ45 Female	
<b>Control</b>				
IR	1 x Mini Stereo Jack Female (Black)		1 x Mini Stereo Jack Female (Black)	
RS-232	Connector: 1 x Terminal Block, 3 pole Baud Rate: 19200, Data Bits:8, Stop Bits:1, no parity and flow control		Connector: 1 x Terminal Block, 3 pole Baud Rate: 19200, Data Bits:8, Stop Bits:1, no parity and flow control	
USB	2 x USB Type A Female (Black)		1 x USB Type B Female (White)	
<b>Connectors</b>				
Power	1 x DC Jack (Black) with locking		1 x DC Jack (Black) with locking	
<b>Power Consumption</b>	DC5V: 4.28W (without USB peripheral device loading)	DC5V: 4.53W (without USB peripheral device loading)	DC5V: 3.07W	DC5V: 3.08W
<b>Environmental</b>				
Operating Temperature	0 - 40° C		0 - 40° C	
Storage Temperature	-20 - 60° C		-2 - 60° C	
Humidity	0 - 80% RH, Non-Condensing		0 - 80% RH, Non-Condensing	
<b>Physical Properties</b>				
Housing	Metal		Metal	
Weight	0.49 kg		0.50 kg	
Dimensions (L x W x H) with bracket	14.02 x 12.30 x 3.06 cm		14.02 x 12.30 x 3.06 cm	
Dimensions (L x W x H) without bracket	13.60 x 10.10 x 2.96 cm		13.60 x 10.10 x 2.96 cm	

Note: Supports 1920x1200@60Hz reduced blanking (ATEN Default EDID only)

Product information is subject to change without prior notice.

## ATEN International Co., Ltd.

3F., No.125, Sec. 2, Datong Rd., Sijhih District., New Taipei City 221, Taiwan  
 Phone: 886-2-8692-6789 Fax: 886-2-8692-6767  
 www.aten.com E-mail: marketing@aten.com

Publish Date: 12/2018 V2.0



© Copyright 2018 ATEN® International Co., Ltd.  
 ATEN and the ATEN logo are trademarks of ATEN International Co., Ltd.  
 All rights reserved. All other trademarks are the property of their respective owners.